

Quartet No. 11 in Eb Major, K. 171

Mozart

Quartet No. 11 in Eb Major

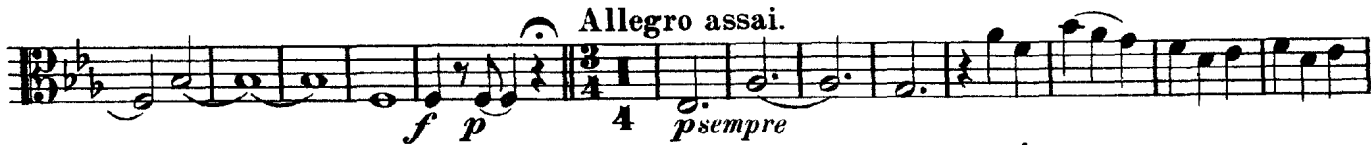
K. 171

Viola

Adagio.



Allegro assai.



F Adagio.



VIOLA.

MENUETTO.

Musical notation for the Menuetto section. It consists of two staves. The first staff begins with a treble clef, a key signature of two flats (Bb and Eb), and a 3/4 time signature. The music starts with a piano (*p*) dynamic and a first ending bracket labeled '1'. The second staff continues the piece, featuring a section marked 'A' with a piano (*p*) dynamic and a first ending bracket labeled '4'. The piece concludes with a forte (*f*) dynamic and a 'Fine.' marking.

TRIO.

Musical notation for the Trio section. It consists of two staves. The first staff begins with a treble clef, a key signature of two flats, and a 3/4 time signature. The music starts with a piano (*p*) dynamic and includes a trill (*tr*) and a section marked 'B'. The second staff continues with a forte (*f*) dynamic and includes a trill (*tr*) and a section marked '3'. The section ends with a 'Men. da capo.' marking.

Andante.
con Sordino

Musical notation for the Andante section. It consists of seven staves. The first staff begins with a treble clef, a key signature of two flats, and a common time signature. The music starts with a forte (*f*) dynamic and includes a section marked '2'. The second staff continues with a piano (*p*) dynamic and a section marked '2'. The third staff includes a section marked 'A' and a first ending bracket labeled '1'. The fourth and fifth staves continue with a forte (*f*) dynamic. The sixth and seventh staves conclude the section with a piano (*p*) dynamic.

Allegro assai.
senza Sordino

Musical notation for the Allegro assai section. It consists of three staves. The first staff begins with a treble clef, a key signature of two flats, and a 3/8 time signature. The music starts with a piano (*p*) dynamic and includes a forte (*f*) dynamic. The second staff continues with a piano (*p*) dynamic and includes sections marked '1' through '6'. The third staff concludes with a forte (*f*) dynamic and a section marked 'A'.

VIOLA.

The musical score for the Viola part of Quartet No. 11 in Eb Major, K. 171, is presented in 11 staves. The key signature is two flats (Eb Major) and the time signature is 3/4. The score includes various dynamics such as *f* (forte) and *p* (piano), as well as articulations like accents and slurs. Specific sections are marked with letters B, C, D, and E. A sequence of five measures is numbered 1 through 5. The piece concludes with a repeat sign and a fermata.