

Suite 1 for Cello Solo

Transposed for viola

JOHANN SEBASTIAN BACH
BWV 1007

Prélude

3

6

9

12

15

18

21

24

27



30



33



36



39



Five musical staves in 12/16 time, key of D major. The notation includes various rhythmic patterns such as eighth and sixteenth notes, often beamed together, and rests. The first staff (27-32) features a melodic line with some accidentals. The second staff (30-32) continues the melodic development. The third staff (33-35) shows a more rhythmic, eighth-note pattern. The fourth staff (36-38) includes a key signature change to D minor for a few measures before returning to D major. The fifth staff (39-41) concludes the section with a final cadence.

Allemande



3



6



9



12



Five musical staves in 12/16 time, key of D major. The notation is characterized by continuous eighth-note patterns, often with slurs indicating phrasing. The first staff (1-2) begins with a treble clef and a key signature of one sharp. The subsequent staves (3-5, 6-8, 9-11, 12-14) continue the melodic and rhythmic development of the piece, maintaining the eighth-note texture.

15

18

21

24

27

30

Courante

4

8

12

Musical score for a piece in 3/8 time, measures 16-39. The key signature is one sharp (F#). The score consists of seven staves of music. Measures 16-17 show a repeat sign. Measures 18-19 show a key change to one flat (Bb). Measures 20-21 show a key change to one sharp (F#). Measures 22-23 show a key change to one flat (Bb). Measures 24-25 show a key change to one sharp (F#). Measures 26-27 show a key change to one flat (Bb). Measures 28-29 show a key change to one sharp (F#). Measures 30-31 show a key change to one flat (Bb). Measures 32-33 show a key change to one sharp (F#). Measures 34-35 show a key change to one flat (Bb). Measures 36-37 show a key change to one sharp (F#). Measures 38-39 show a key change to one flat (Bb).

Sarabande

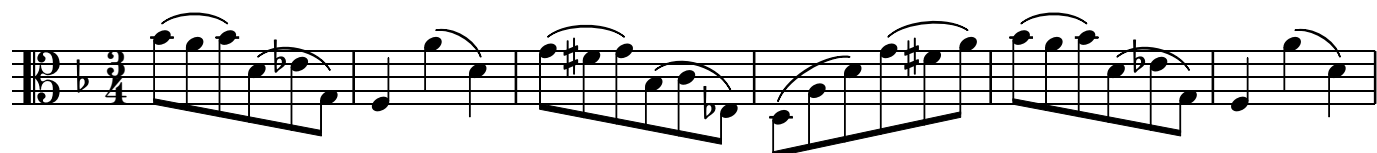
Musical score for a Sarabande in 3/4 time, measures 1-9. The key signature is one sharp (F#). The score consists of three staves of music. Measures 1-2 show a key change to one flat (Bb). Measures 3-4 show a key change to one sharp (F#). Measures 5-6 show a key change to one flat (Bb). Measures 7-8 show a key change to one sharp (F#). Measure 9 shows a key change to one flat (Bb).



Menuet 1



Menuet 2



Gigue

The musical score for the Gigue is written in 6/8 time with a key signature of one sharp (F#). The piece consists of 36 measures, organized into six systems of six measures each. The notation includes various rhythmic patterns such as eighth and sixteenth notes, often beamed together, and rests. A trill (tr.) is indicated in the fifth measure of the first system. The score concludes with a double bar line and repeat dots in the final measure.